



NENUTEC WATER - NVCB 9000 SERIES

BALL VALVES WITH CHARACTERISED DISC | 2-WAY FLANGED



Pictures might not correspond with technical data.

NVCB 9000 SERIES

NENUTEC ball valves with characterised discs are especially designed and produced for applications in the HVAC chiller and zone systems.

Our wide range of NENUTEC ball valves has been developed to regulate closed cold and warm water systems and for modulating control of airhandling and heating systems on the water side.

Ball valve:

- NVCB Ball valve size DN 65 (2½") up to DN 150 (6")
- 2-way with characterised disc
- Equal-percentage characteristic of the flow rate ensured by integral characterizing disc

Actuator selection:

- NEA...(S) / NES...(S) / FSA...(S)
- 16Nm - 24Nm torque
- Power Supply AC/DC 24 V and AC 230 V
- 2-Point, 3-Point or Modulating control
- 2 adjustable auxiliary switches (SPDT)
- Customer version on request
- For more detailed information
 - > Refer to NEAA.../NEAM... data sheet
 - > Refer to NESA.../NESM... data sheet
 - > Refer to FSAA.../FSAM... datasheet

TECHNICAL SPECIFICATIONS

Service	Chilled, hot water, up to 50% glycol solutions		
Fluid temperature limits	Water: -5° C...+120° C		
Ambient operating temperature	-20° C...+50° C / IEC 721-3-3		
Non-operating temperature	-30° C...+60° C / IEC 721-3-2		
Valve body pressure / temperature rating	Water: 1.6 MPa (PN16)		
Maximum closeoff pressure	0.35 MPa		
Maximum operating pressure drop	232 psi (1.599kPa)		
Flow characteristic	Equal Percentage flow characteristic		
Leakage	0.01% of KVS (maximum flow)		
Pipe connection	Flange PN16 to EN 1092-1		
Flange	DN 65 (4 x Ø18mm), DN 80 - DN 150 (8x Ø18mm)		
Body sizes	DN 65 (2½"), DN 80 (3"), DN 100 (4"), DN 125 (5"), DN 150 (6")		
Materials	Body: forged brass polyester coated Stem: chrome plated brass	Seats: PTFE Stem seals: 2 x EPDM o-ring	Ball: chrome plated brass Disc: polyphthalamide resin

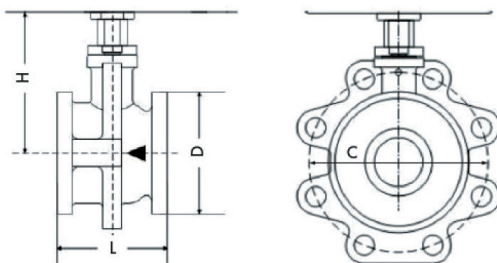


Model selection table

DN (mm)	DN (Inch)	Model	Kvs	Weight (kg)	Actuator type**
65	2½"	NVCB 9065	63	4.5	NEA...16(S) / FSA...16(S) / NES...15(S)
80	3"	NVCB 9080	100	6.8	NEA...16(S) / FSA...16(S) / NES...15(S)
100	4"	NVCB 9100	140	8.8	NEA...24(S) / FSA...24(S)
125	5"	NVCB 9125	230	11.85	NEA...24(S) / FSA...24(S)
150	6"	NVCB 9150	320	18.35	NEA...24(S) / FSA...24(S)

****Ordering:** NVCB... ist the name of the valve. If you want to order a valve together with an actuator you need to specify the actuator in your order too. In the table above you can see which actuators we recommend for the different valves and application.

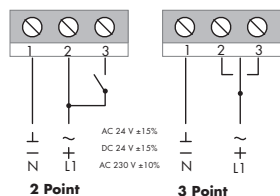
Dimensions of valve body (mm)



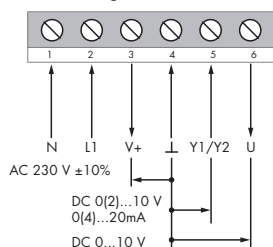
DN(mm)	65	80	100	125	150
Length (L)	97	108	120	144.5	167
Height (H)	136	140	154	156.5	181.5
Diameter (D)	105	125	148	183	205
Flange reference circle (C)	145	160	180	210	240
Holes (C)	4 x Ø18	4 x Ø18	8 x Ø18	8 x Ø18	8 x Ø18

Wiring diagram actuator

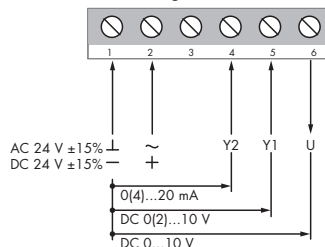
2-Point/3-Point 24V & 230V



Modulating 230V



Modulating 24V



Wiring without auxiliary switches. For further information refer to the NEA...(S)/FSA...(S)/NES...(S) datasheets

NENUTEC AG

Schachenstrasse 80
 CH - 8645 Jona/SG - Switzerland
 T: +41 55 224 40 60
 F: +41 55 224 40 69
 www.nenutec.com

Distributor

Distributor